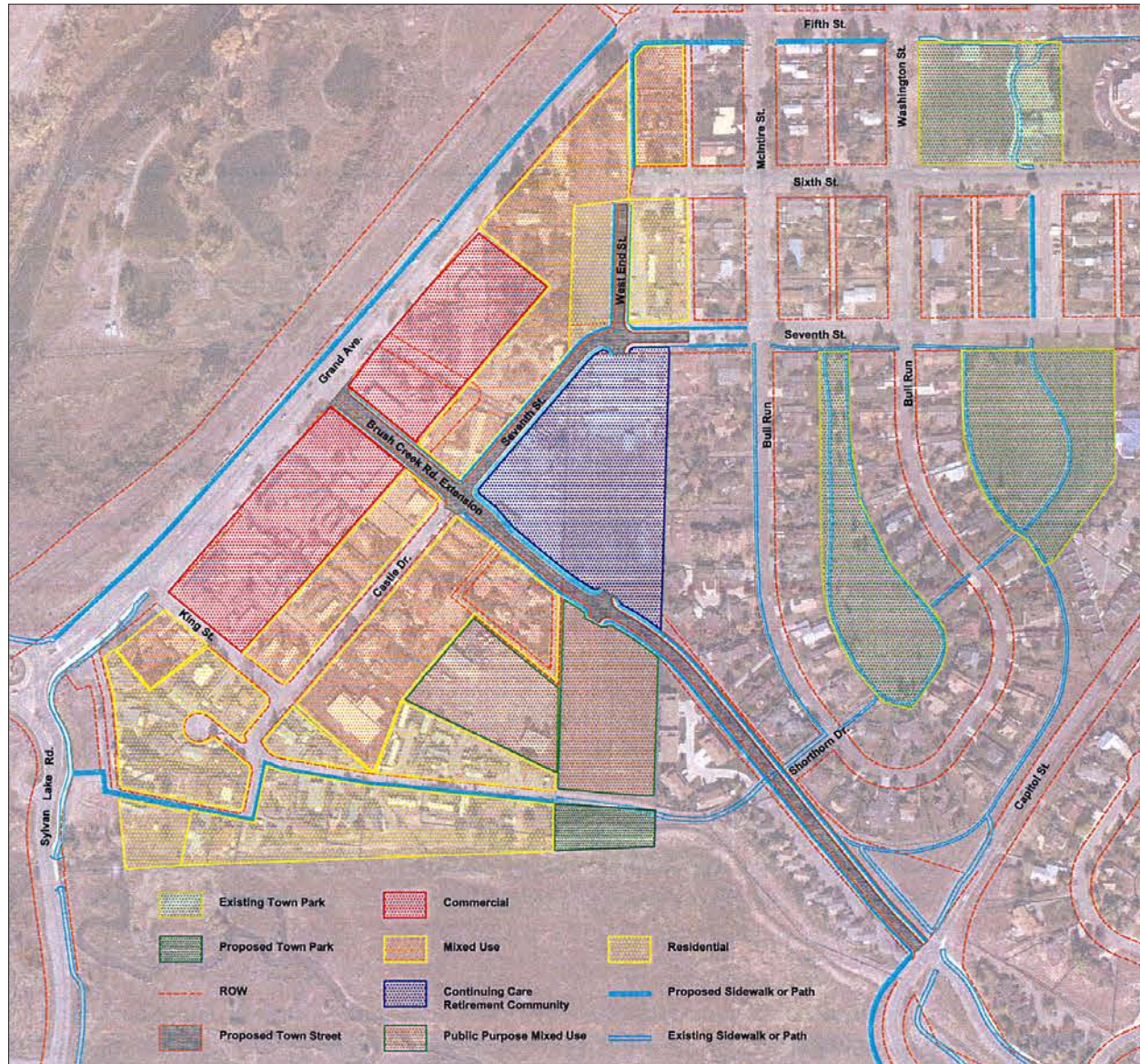


FUTURE LAND USE MAP DESIGNATIONS

VI. FUTURE LAND USE MAP/ CIRCULATION PLAN

The Future Land Use Map map shows the general distribution of land uses recommended by this plan. Note that these are future land use planning designations and proposed road and pedestrian connections rather than Official Zone Districts and Street Map. Please consult the Town of Eagle Zoning Map for the current zone district designations and street map. Any significant redevelopment of property within the West Eagle Neighborhood is encouraged to use the Planned Unit Development Zone District. This provides flexibility to accommodate a mixture of uses, increased density, flexibility in site design and opportunity for the Town and applicant to agree on a more specific development approval that is beneficial to both applicant/developer and the Town.



See 11x17 Future Land Use Map Designations insert in back.

Figure 19: Land Use Map Designations