

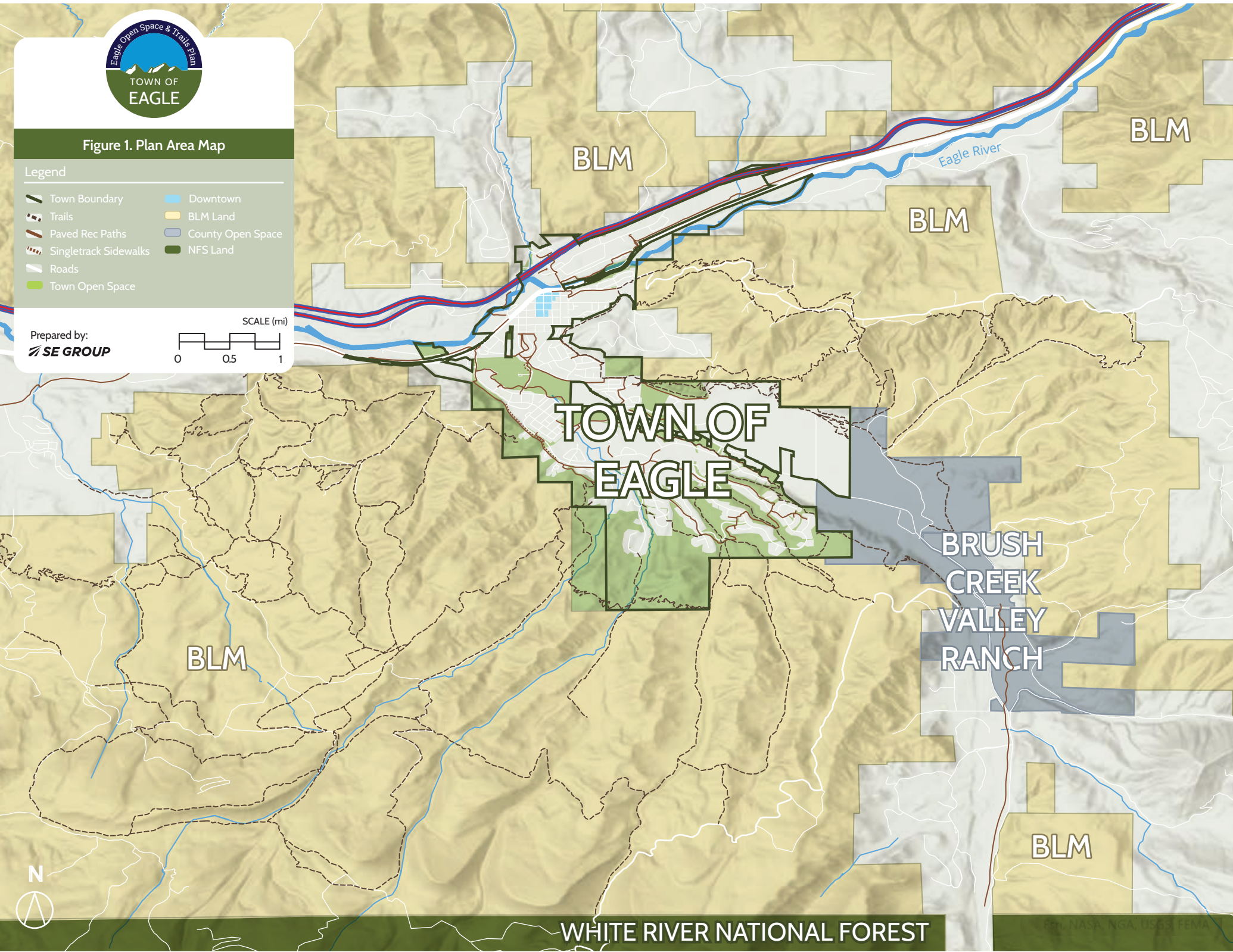
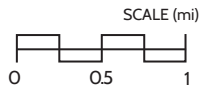


Figure 1. Plan Area Map

Legend

- Town Boundary
- Trails
- Paved Rec Paths
- Singletrack Sidewalks
- Roads
- Town Open Space
- Downtown
- BLM Land
- County Open Space
- NFS Land

Prepared by:
SE GROUP



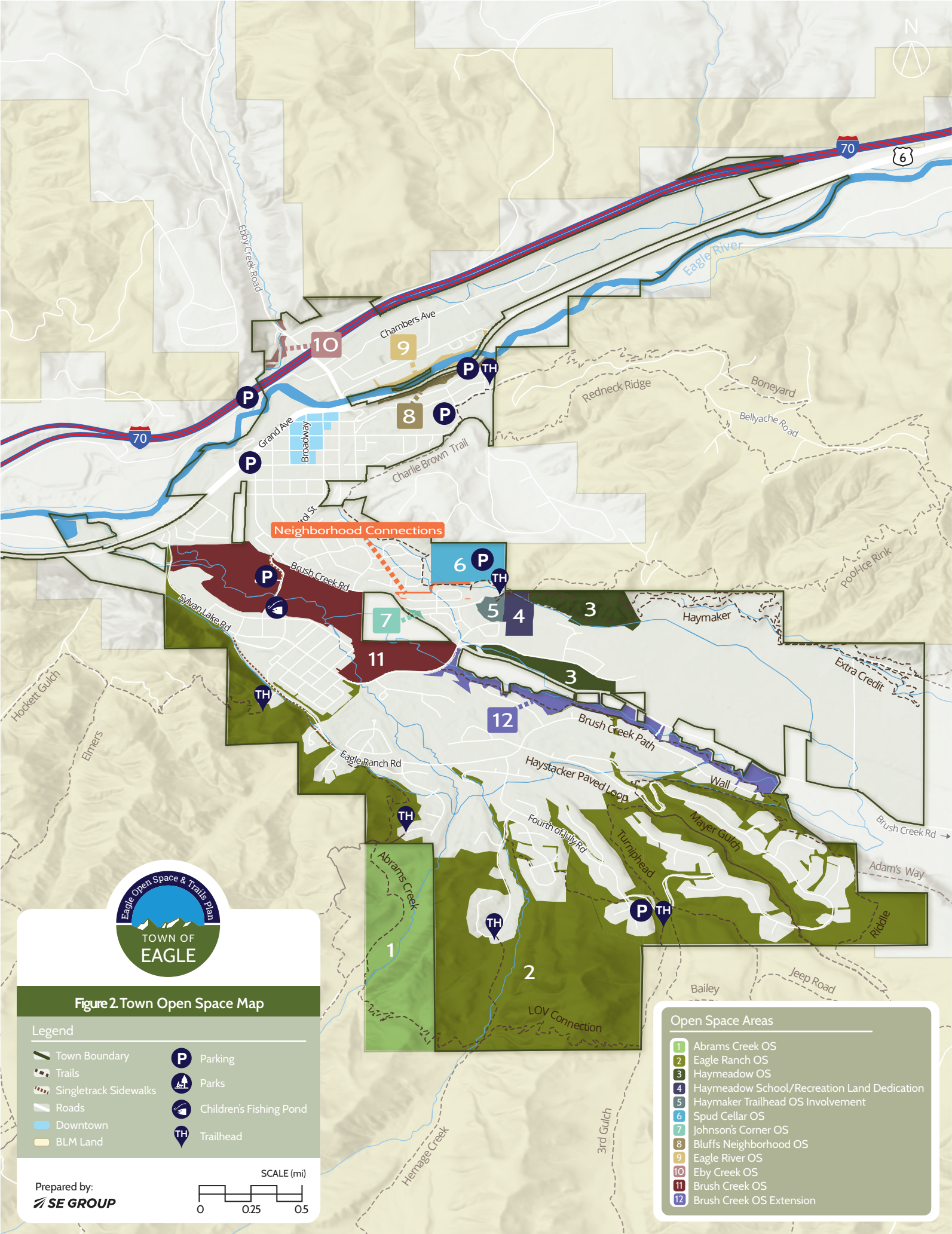


Figure 2 Town Open Space Map

- Legend**
- Town Boundary
 - Trails
 - Singletrack Sidewalks
 - Roads
 - Downtown
 - BLM Land
 - Parking
 - Parks
 - Children's Fishing Pond
 - Trailhead

Prepared by:
SE GROUP

SCALE (mi)
0 0.25 0.5

- Open Space Areas**
- 1 Abrams Creek OS
 - 2 Eagle Ranch OS
 - 3 Haymeadow OS
 - 4 Haymeadow School/Recreation Land Dedication
 - 5 Haymaker Trailhead OS Involvement
 - 6 Spud Cellar OS
 - 7 Johnson's Corner OS
 - 8 Bluffs Neighborhood OS
 - 9 Eagle River OS
 - 10 Eby Creek OS
 - 11 Brush Creek OS
 - 12 Brush Creek OS Extension

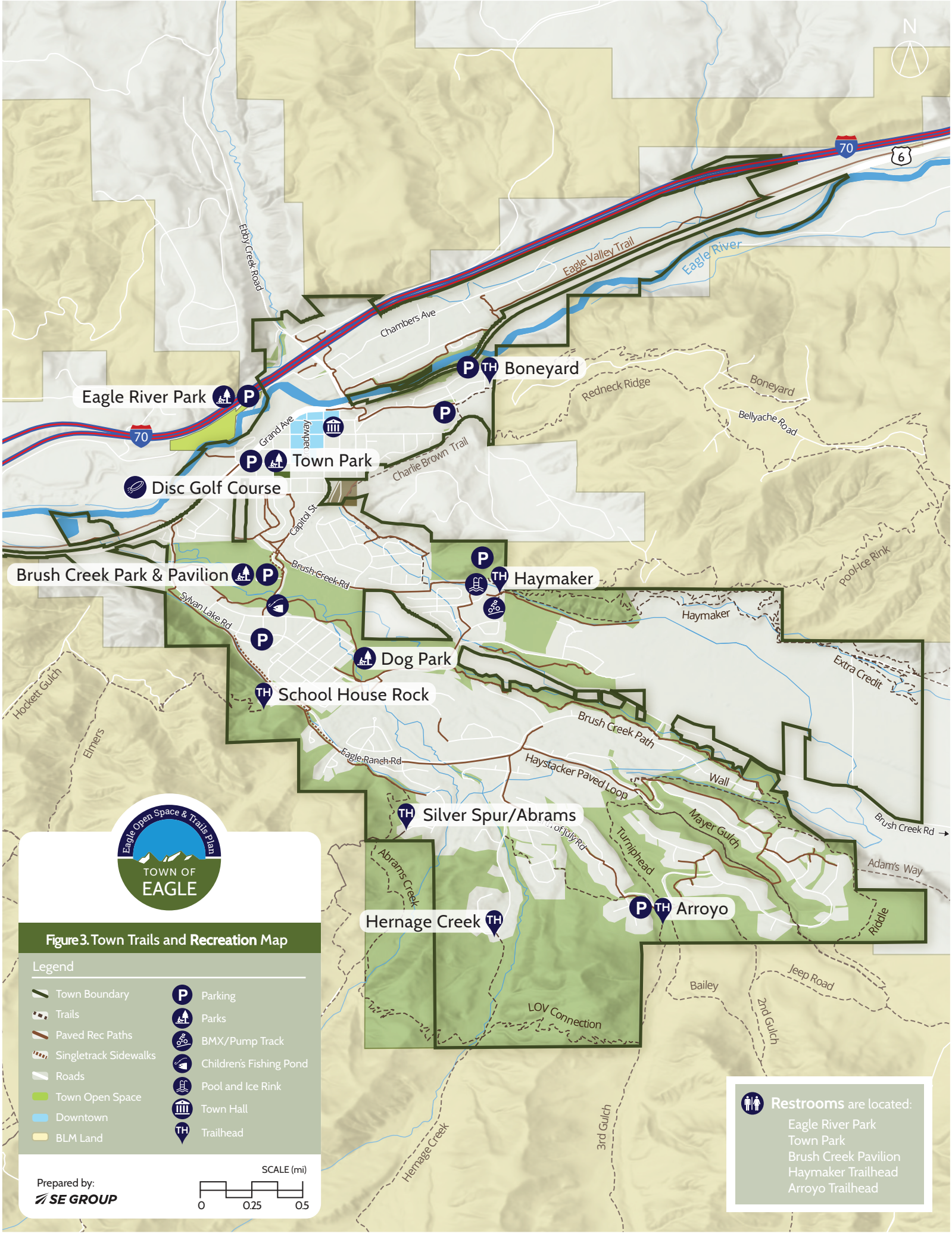
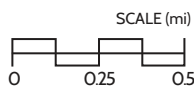


Figure 3. Town Trails and Recreation Map

Legend

- | | |
|-----------------------|-------------------------|
| Town Boundary | Parking |
| Trails | Parks |
| Paved Rec Paths | BMX/Pump Track |
| Singletrack Sidewalks | Children's Fishing Pond |
| Roads | Pool and Ice Rink |
| Town Open Space | Town Hall |
| Downtown | Trailhead |
| BLM Land | |

Prepared by:
SE GROUP



Restrooms are located:

- Eagle River Park
- Town Park
- Brush Creek Pavilion
- Haymaker Trailhead
- Arroyo Trailhead

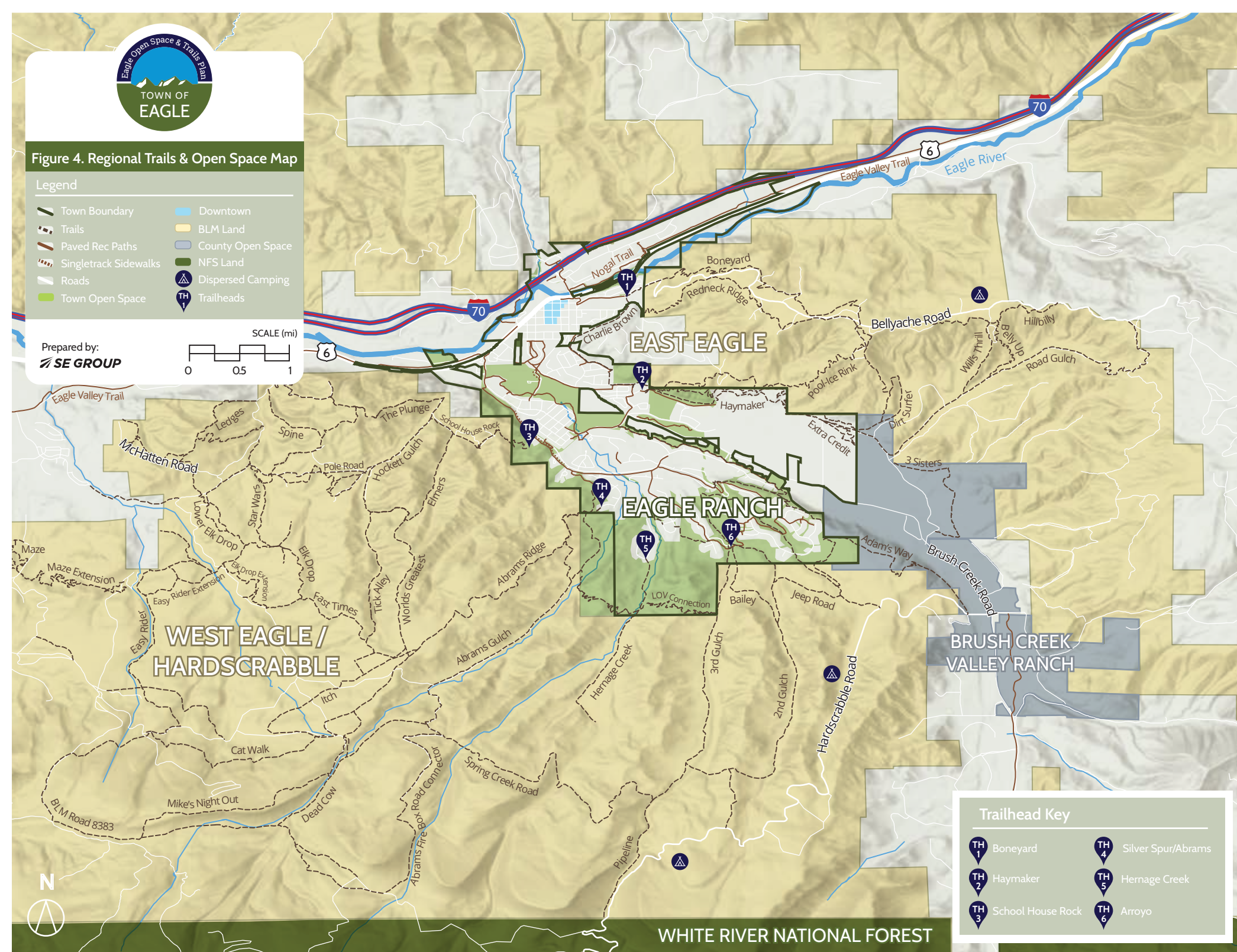
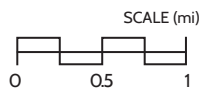


Figure 4. Regional Trails & Open Space Map

Legend

- Town Boundary
- Trails
- Paved Rec Paths
- Singletrack Sidewalks
- Roads
- Town Open Space
- Downtown
- BLM Land
- County Open Space
- NFS Land
- Dispersed Camping
- Trailheads

Prepared by:
SE GROUP



Trailhead Key

- | | |
|------------------------|-------------------------|
| TH 1 Boneyard | TH 4 Silver Spur/Abrams |
| TH 2 Haymaker | TH 5 Hernage Creek |
| TH 3 School House Rock | TH 6 Arroyo |



Figure 5. Elk Habitat Map

Legend

- | | |
|------------------|---|
| Town Boundary | Severe Winter Range |
| Roads | Winter Concentration Areas |
| Winter Range | Severe Winter Range/Winter Concentration Area (Overlap) |
| Production Areas | |

Elk summer range covers the whole map area except for parts of Downtown. Migration corridors and summer concentration areas are not within the frame of this map

Source: CPW Species Activity Mapper

Prepared by:

SE GROUP



SCALE (mi)



This data is provided by Colorado Parks and Wildlife. For up to date information, please contact Colorado Parks and Wildlife.



Figure 6. Mule Deer Habitat Map

Legend

- | | |
|--------------------|---|
| Town Boundary | Severe Winter Range |
| Roads | Winter Concentration Areas |
| Winter Range | Severe Winter Range/Winter Concentration Area (Overlap) |
| Concentration Area | Migration Corridor |

Mule Deer summer range covers the whole map area except for parts of Downtown

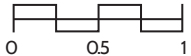
Source: CPW Species Activity Mapper

Prepared by:

SE GROUP



SCALE (mi)



This data is provided by Colorado Parks and Wildlife. For up to date information, please contact Colorado Parks and Wildlife.

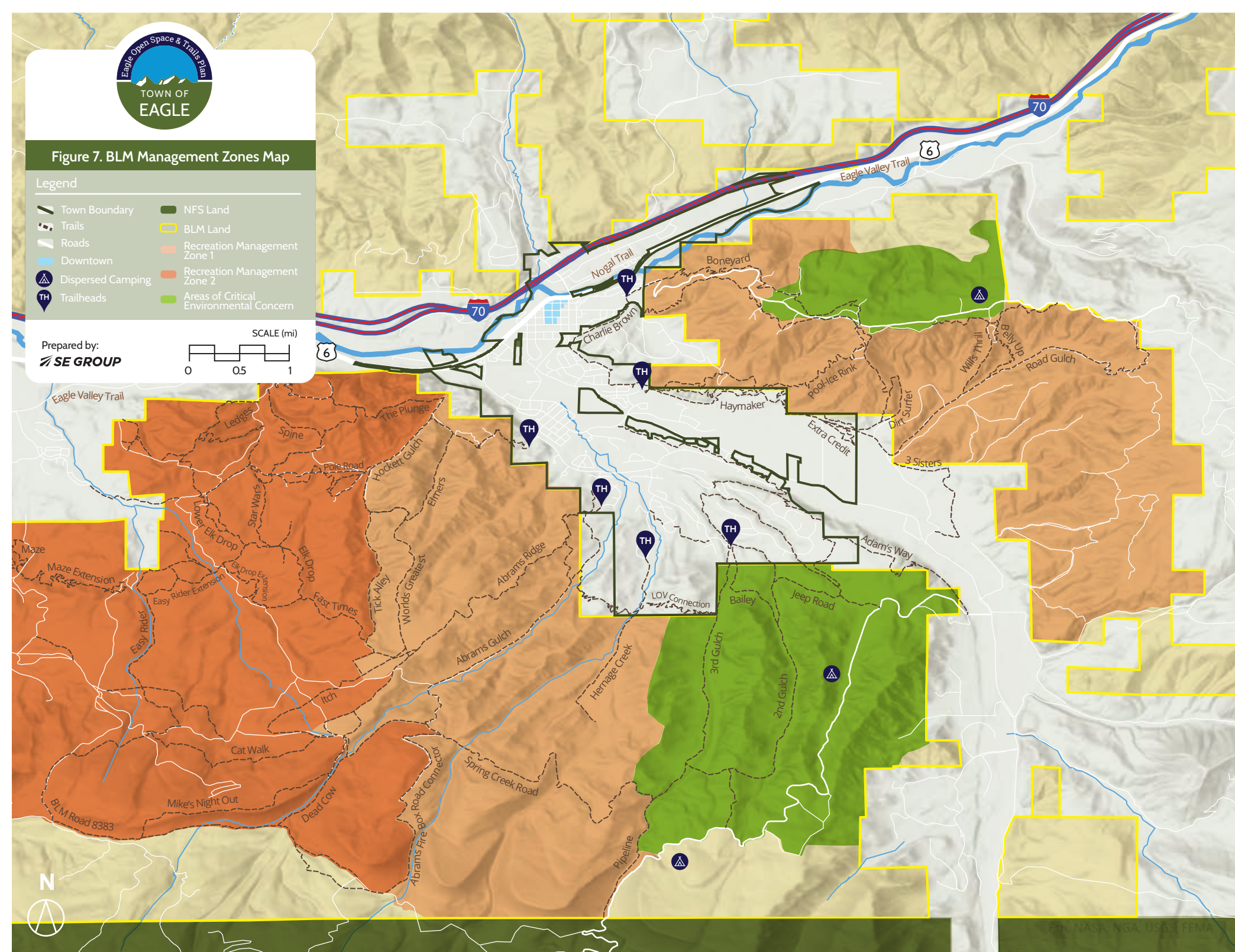
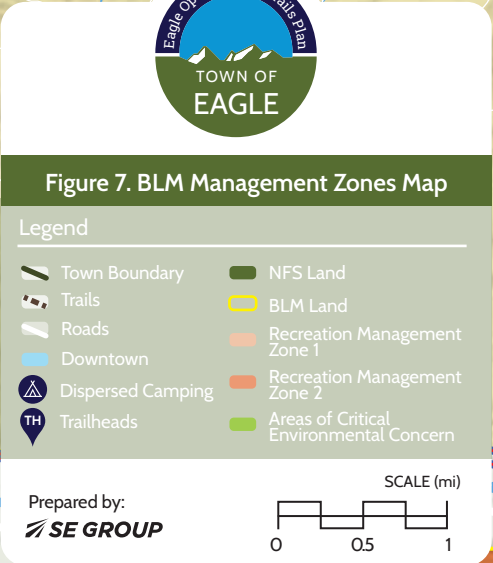


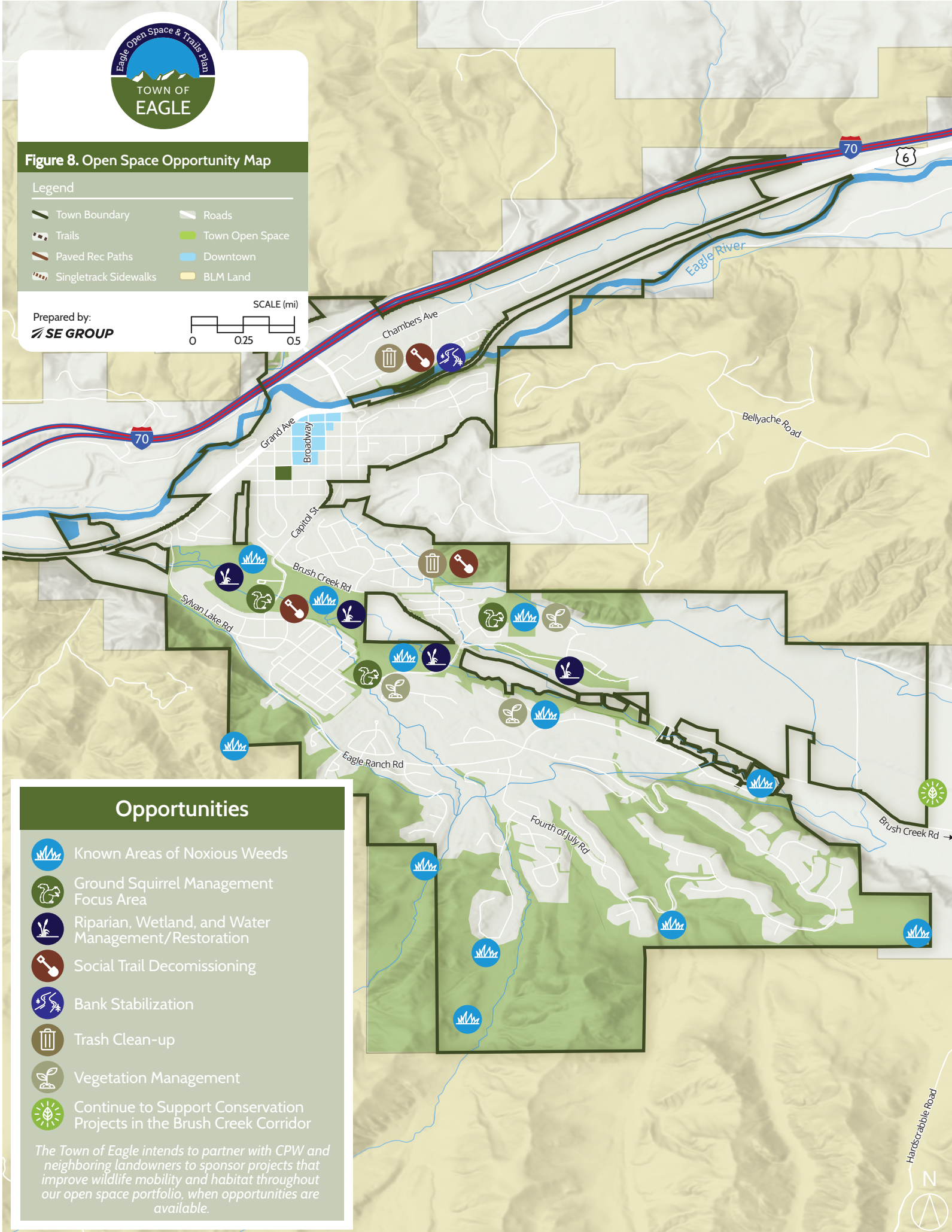
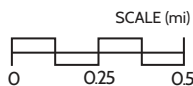


Figure 8. Open Space Opportunity Map

Legend

- | | |
|-----------------------|-----------------|
| Town Boundary | Roads |
| Trails | Town Open Space |
| Paved Rec Paths | Downtown |
| Singletrack Sidewalks | BLM Land |

Prepared by:
SE GROUP



Opportunities

- Known Areas of Noxious Weeds
- Ground Squirrel Management Focus Area
- Riparian, Wetland, and Water Management/Restoration
- Social Trail Decommissioning
- Bank Stabilization
- Trash Clean-up
- Vegetation Management
- Continue to Support Conservation Projects in the Brush Creek Corridor

The Town of Eagle intends to partner with CPW and neighboring landowners to sponsor projects that improve wildlife mobility and habitat throughout our open space portfolio, when opportunities are available.





Figure 9. Trail Recommendations Map

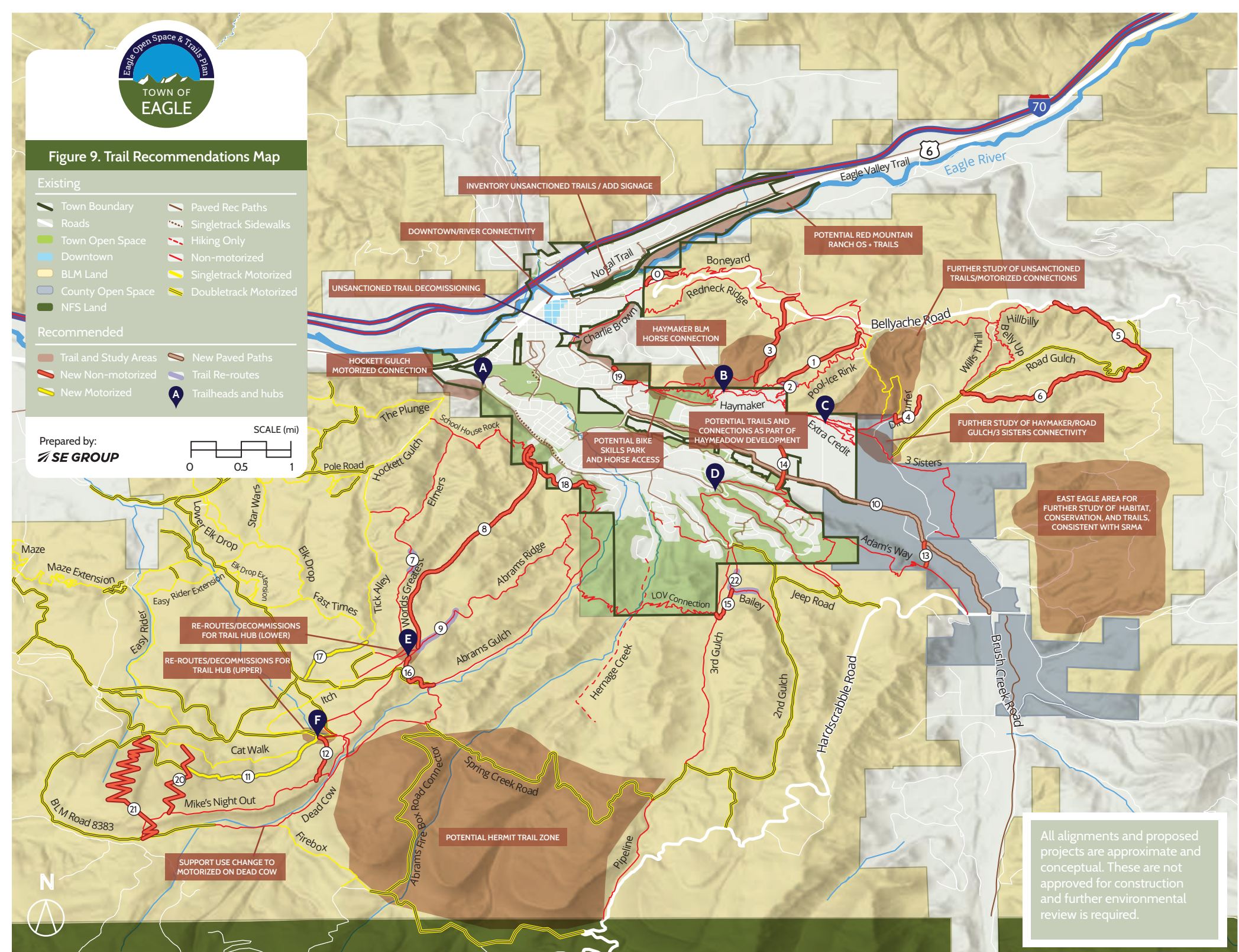
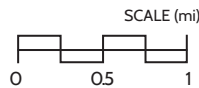
Existing

- Town Boundary
- Roads
- Town Open Space
- Downtown
- BLM Land
- County Open Space
- NFS Land
- Paved Rec Paths
- Singletrack Sidewalks
- Hiking Only
- Non-motorized
- Singletrack Motorized
- Doubletrack Motorized

Recommended

- Trail and Study Areas
- New Non-motorized
- New Motorized
- New Paved Paths
- Trail Re-routes
- Trailheads and hubs

Prepared by:
SE GROUP



All alignments and proposed projects are approximate and conceptual. These are not approved for construction and further environmental review is required.