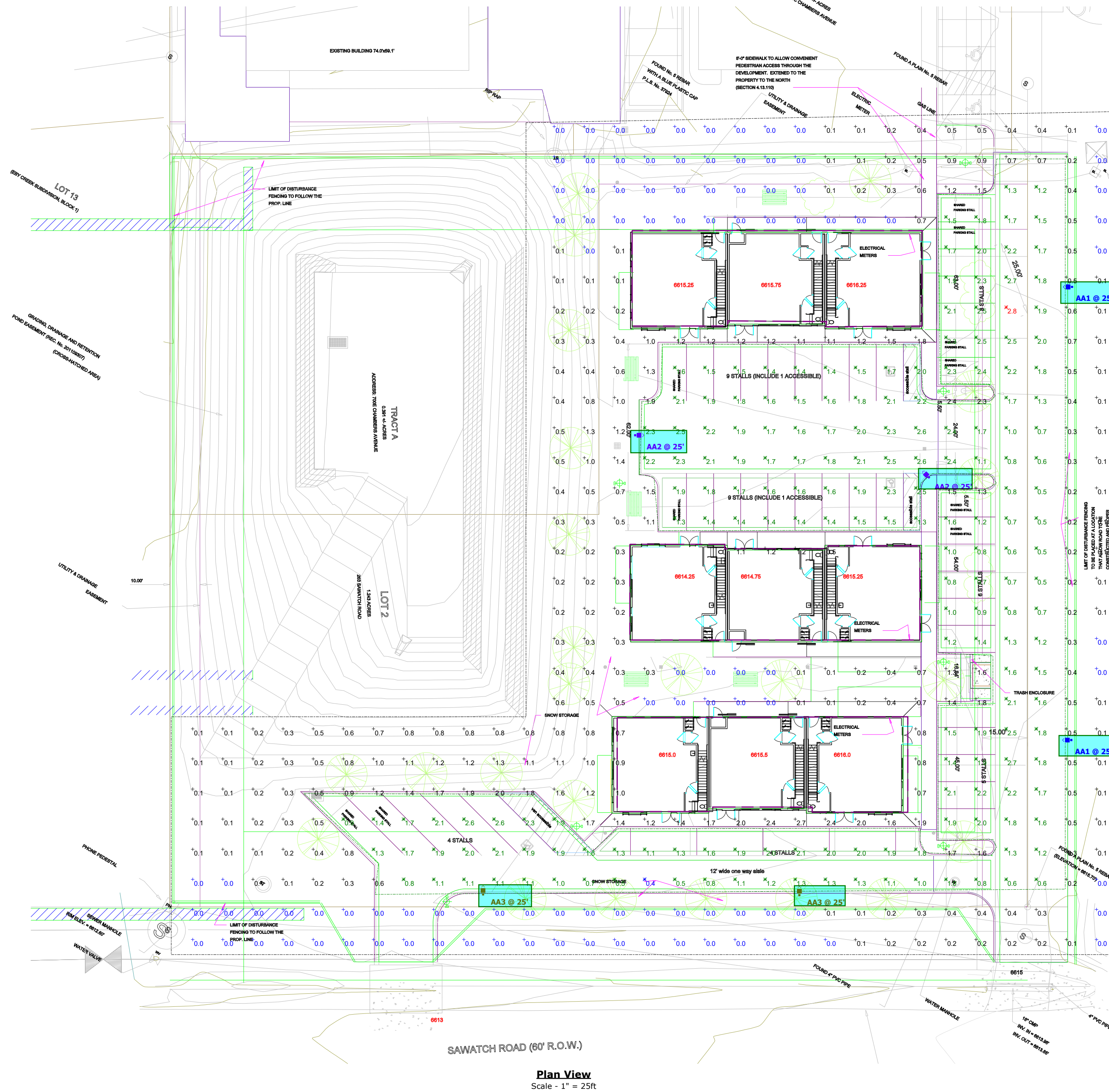


Symbol	Label	Quantity	Manufacturer	Catalog Number	Description	Number Lamps	Lumens Per Lamp	Light Loss Factor	Wattage	Plot
	AA1	2	Lithonia Lighting	DSX1 LED P4 30K 80CRI BLC3	D-Series Size 1 Area Luminaire P4 Performance Package 3000K CCT 80 CRI Type 3 Extreme Backlight Control	1	10150	0.85	123.94	
	AA2	2	Lithonia Lighting	DSX1 LED P4 30K 80CRI TFM	D-Series Size 1 Area Luminaire P4 Performance Package 3000K CCT 80 CRI Forward Throw	1	14272	0.85	123.94	
	AA3	2	Lithonia Lighting	DSX1 LED P6 30K 80CRI BLC4	D-Series Size 1 Area Luminaire P6 Performance Package 3000K CCT 80 CRI Type 4 Extreme Backlight Control	1	13440	0.85	165.25	

Luminaire Locations										
Location								Aim		
No.	Label	X	Y	Z	MH	Orientation	Tilt	X	Y	Z
1	AA1	399.75	-146.75	25.00	25.00	270.00	0.00	398.46	-146.75	0.00
2	AA1	399.50	-297.25	25.00	25.00	270.00	0.00	398.21	-297.25	0.00
1	AA2	254.75	-196.00	25.00	25.00	90.00	0.00	256.04	-196.00	0.00
1	AA3	204.25	-348.50	25.00	25.00	0.00	0.00	204.25	-347.21	0.00
2	AA3	309.25	-348.75	25.00	25.00	0.00	0.00	309.25	-347.46	0.00
2	AA2	352.25	-210.00	25.00	25.00	315.00	0.00	351.34	-209.09	0.00

Statistics							
Description	Symbol	Avg	Max	Min	Max/Min	Avg/Min	Calc Ht
Parking/Driving		1.6 fc	2.8 fc	0.4 fc	7.0:1	4.0:1	
Site		0.8 fc	2.8 fc	0.0 fc	N/A	N/A	



**Note**

Lighting calculation software is for estimating purposes only, not generating exact values.

These calculations are for the use and adoption by our clients and theirs' solely at their discretion. This includes evaluation of the calculated lighting levels and model by the Architect, Engineer, Lighting Designer or Owner for adherence to the project's lighting specifications for levels and uniformity.

We make no guarantees of meeting any subjective expectations. Calculations are based on a model only. Space characteristics and electrical supply to fixtures, along with installation details, may alter fixture output and model performance. Model is based on standard reflectance values unless otherwise noted.

Any variance from reflectance values, obstructions, light loss factors (including both physical and electrical in nature) or dimensional data will affect the actual light levels obtained.

The Lighting Agency provides these calculations as a courtesy for evaluation only. Final construction drawings and calculations are the responsibility of a licensed architect or engineer.