



AT&T

SITE NAME: EAGLE COUNTY GOVERNMENT OFFICE

PROJECT: MBO/SBO NSB

ADDRESS: 500 BROADWAY STREET  
EAGLE, CO 81631

FA LOCATION CODE: 16231705

PACE NUMBER: MRUTH058067

USID: 327462

SITE CONTACT:

JESSE MERYHEW  
EAGLE COUNTY  
970.390.3617  
JESSE.MERYHEW@EAGLECOUNTY.US

PROJECT DESCRIPTION:

INSTALLATION OF (1) NEW AT&T ANTENNA MOUNTED TO AN EXISTING STAIRWELL TOWER, SUPPORTED BY (1) NEW MBO (MULTI-BAND OUTDOOR) & (1) NEW SBO (SINGLE-BAND OUTDOOR) MOUNTED INSIDE THE STAIRWELL TOWER, TO PROVIDE COVERAGE FOR THE SURROUNDING AREA.

SITE ACCESS:

MUST SCHEDULE SITE VISITS, PRIOR TO ACCESSING SITE. HEAD END IS LOCATED IN STAIRWELL TOWER ON LEVEL 2.

PROJECT DATA:

COUNTY:	EAGLE
JURISDICTION:	TOWN OF EAGLE
PARCEL NUMBER:	2109-051-12-001
PROPERTY OWNER:	EAGLE COUNTY
ZONING DISTRICT:	PUBLIC AREA (PA)
ACREAGE:	1.720
LEGAL DESCRIPTION:	SUBDIVISION: EAGLE BLOCK: 28 LOTS 1-24, TOGETHER WITH WEST HALF OF VACATED BROADWAY R.O.W. BETWEEN 5TH ST. AND 6TH ST
OCCUPANCY TYPE:	A-3, B
CONSTRUCTION TYPE:	A-3
NUMBER OF STORIES:	3
FULLY SPRINKLERED:	YES
GOVERNING CODES:	2015 IBC, 2017 NEC

SHEET LIST:

T1	TITLE SHEET
Z1.0	OVERALL SITE PLAN
Z2.1	N & E ELEVATIONS
Z2.2	S & W ELEVATIONS
Z3.1	EQUIPMENT DETAILS

SITE PHOTO:



SITE MAP:



PROJECT TEAM:

CONSTRUCTION MANAGER:

QUIN GELFAND  
AT&T WIRELESS  
214.208.5407  
QG112C@ATT.COM

RF MANAGER:

YASH NANJUNDASWAMY  
AT&T WIRELESS  
303.374.4645  
YN211V@ATT.COM

A&E MANAGER:

ADAM DAILEY  
MOUNTAIN WIRELESS  
720.255.6089  
ADAILEY@MOUNTAINWIRELESS.COM



927 SALIDA WAY  
AURORA, CO 80011  
303.343.6544

ZONING  
NOT FOR CONSTRUCTION

AT&T



7670 S CHESTER ST  
CENTENNIAL, CO 80112

SITE NAME:

EAGLE COUNTY GOVERNMENT OFFICE

SITE NUMBERS:

FA LOC: 16231705  
PACE #: MRUTH058067  
USID: 327462

SITE ADDRESS:

500 BROADWAY STREET  
EAGLE, CO 81631

PROJECT:

MBO/SBO NSB

ISSUE PHASE:

ZONING - REVISION B

ISSUE DATE:

07.24.2023

TITLE SHEET

T1

SCALE SET FOR 24"x36" SHEET  
USE 1/2 SCALE FOR 11"x17" SHEET

**ZONING  
NOT FOR CONSTRUCTION**



7670 S CHESTER ST  
CENTENNIAL, CO 80112

**SITE NAME:**  
EAGLE COUNTY GOVERNMENT  
OFFICE

**SITE NUMBERS:**  
FA LOC: 16231705  
PACE #: MRUTH058067  
USID: 327462

**SITE ADDRESS:**  
500 BROADWAY STREET  
EAGLE, CO 81631

**PROJECT:**  
MBO/SBO NSB

**ISSUE PHASE:**  
ZONING - REVISION B

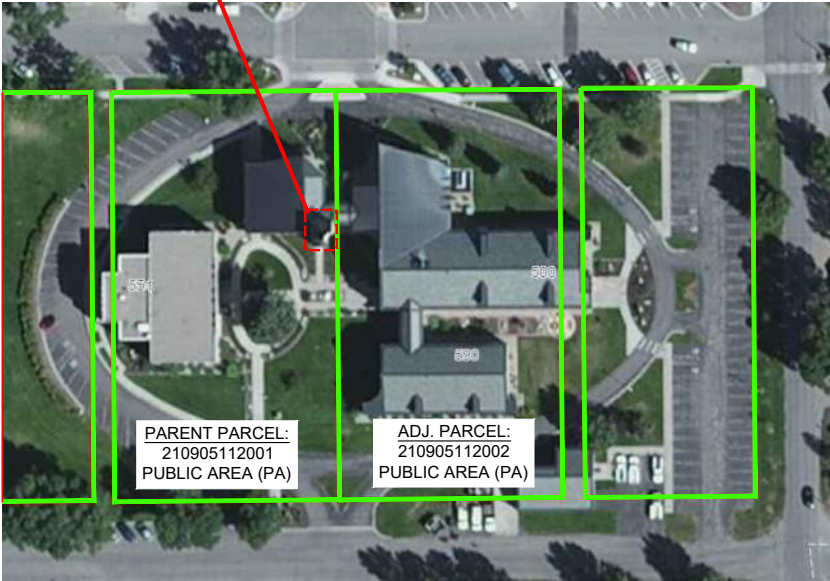
**ISSUE DATE:**  
07.24.2023

OVERALL SITE PLAN

**Z1.0**

SCALE SET FOR 24"x36" SHEET  
USE 1/2 SCALE FOR 11"x17" SHEET

NEW AT&T ANTENNA  
(SEE PHOTO 'A')



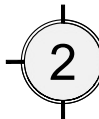
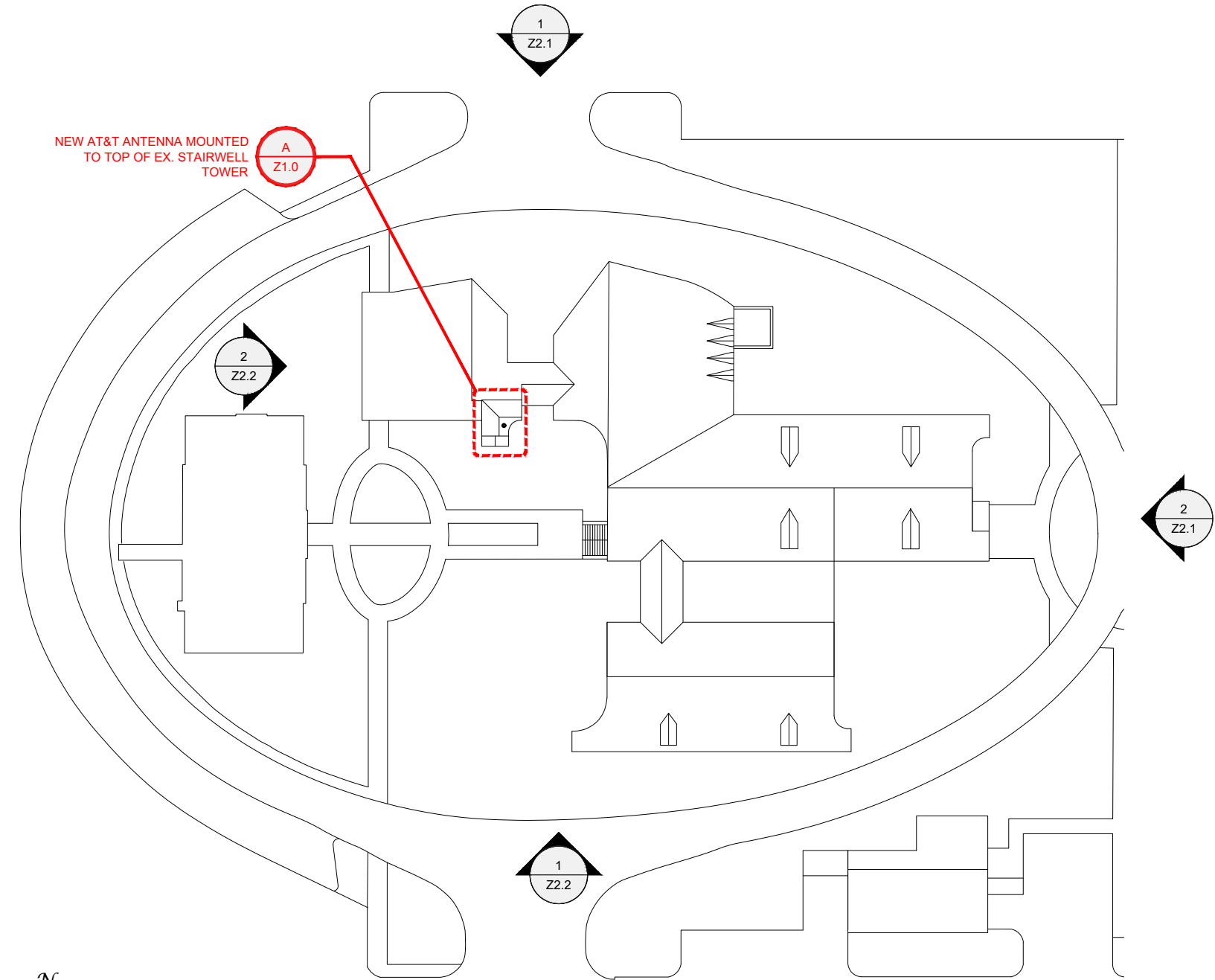
**PROPERTY MAP**  
SCALE:

**LINE TYPE LEGEND:**  
PARCEL LINE

NEW AT&T ANTENNA MOUNTED TO TOP OF EX.  
STAIRWELL TOWER  
(CENTERED & PAINTED TO MATCH TOWER ROOF)



**'A'**  
NEW ANTENNA PHOTO SIMULATION  
(GROUND LEVEL - LOOKING NORTH)



**OVERALL SITE PLAN**

SCALE: 1" = 40'-0"

0' 20' 40' 80'  
Scale: 1" = 40'-0"



927 SALIDA WAY  
AURORA, CO 80011  
303.343.6544

**ZONING**  
**NOT FOR CONSTRUCTION**



7670 S CHESTER ST  
CENTENNIAL, CO 80112

**SITE NAME:**  
EAGLE COUNTY GOVERNMENT  
OFFICE

**SITE NUMBERS:**  
FA LOC: 16231705  
PACE #: MRUTH058067  
USID: 327462

**SITE ADDRESS:**  
500 BROADWAY STREET  
EAGLE, CO 81631

**PROJECT:**  
MBO/SBO NSB

**ISSUE PHASE:**  
ZONING - REVISION B

**ISSUE DATE:**  
07.24.2023

N & E ELEVATIONS

**Z2.1**

SCALE SET FOR 24"x36" SHEET  
USE 1/2 SCALE FOR 11"x17" SHEET



**ZONING**  
**NOT FOR CONSTRUCTION**

**AT&T**



7670 S CHESTER ST  
CENTENNIAL, CO 80112

**SITE NAME:**  
EAGLE COUNTY GOVERNMENT  
OFFICE

**SITE NUMBERS:**  
FA LOC: 16231705  
PACE #: MRUTH058067  
USID: 327462

**SITE ADDRESS:**  
500 BROADWAY STREET  
EAGLE, CO 81631

**PROJECT:**  
MBO/SBO NSB

**ISSUE PHASE:**  
ZONING - REVISION B

**ISSUE DATE:**  
07.24.2023

S & W ELEVATIONS

**Z2.2**

SCALE SET FOR 24"x36" SHEET  
USE 1/2 SCALE FOR 11"x17" SHEET

ANTENNA TIP HEIGHT  
75'-10"

STAIRWELL TOWER  
71'-10"

NEW AT&T ANTENNA MOUNTED TO TOP OF EX.  
STAIRWELL TOWER  
(CENTERED & PAINTED TO MATCH TOWER ROOF)

EX. STAIRWELL TOWER

COURTYARD  
12'-0"

GRADE  
0'-0"

**1 SOUTH ELEVATION**  
SCALE: 3/32" = 1'-0"

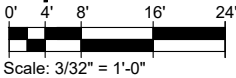
ANTENNA TIP HEIGHT  
75'-10"

STAIRWELL TOWER  
71'-10"

COURTYARD  
12'-0"

GRADE  
0'-0"

**2 WEST ELEVATION**  
SCALE: 3/32" = 1'-0"



Scale: 3/32" = 1'-0"

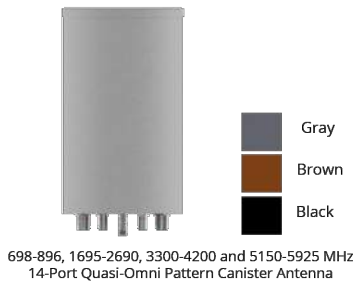


2' 14-Port Quasi-Omni Pattern Canister Antenna [698-896, 1695-2690, 3300-4200 and 5150-5925 MHz]

GQ2414-B6790

Description:

- Quasi-Omni Pattern Canister Antenna for Outdoor DAS and Small Cells
- 4x ports for Low Band 698-896 MHz
- 4x ports for AWS/PCS/WCS Band 1695-2690 MHz
- 4x ports for C-Band 3300-4200 MHz
- 2x ports for U-NII Band 5150-5925 MHz\*



\*Compliant to 789033 D02 General U-NII Test Procedures New Rules v01r04: The antenna meets current U-NII-1 requirements for gain and upper side-lobe performance. Guidelines for Compliance Testing of Unlicensed National Information Infrastructure (U-NII) Devices - Part 15, Sub-part E

Electrical Specifications								
Frequency Band [MHz]	698-896	1695-2200	2305-2360	2496-2690	3300-3550	3550-3700	3700-4200	5150-5925
Input Connector Type	4x 4.3-10(F)	4x 4.3-10(F)			4x 4.3-10(F)			2x 4.3-10(F)
Isolation (min.)	23 dB	20 dB	25 dB		20 dB			25 dB
VSWR (max.) /RL (min.)	1.5:1 / 14.0 dB							
Impedance	50 Ω							
Polarization	Dual slant 45° (±45°)							
Horizontal Beamwidth	Omni (360°)							
Vertical Beamwidth	83.9°	22.6°	18.6°	16.6°	25.4°	25.8°	23.7°	21.3°
Gain (max.)	4.1 dBi	9.1 dBi	8.7 dBi	9.5 dBi	8.1 dBi	8.6 dBi	8.0 dBi	5.5 dBi
Gain (avg.)	3.4 dBi	8.0 dBi	8.1 dBi	8.6 dBi	7.3 dBi	7.5 dBi	7.2 dBi	4.3 dBi
Downtilt	0° Fixed							
Max Power / Port	100 Watts				100 Watts			1 Watt
PIM @ 2x43 dBm	<-153 dBc				N/A			N/A

Mechanical Specifications	
Operating Temperature	-40° to 158°F (-40° to +70°C)
Antenna Weight	22.5 lbs (10.2 kg)
Antenna Diameter	14.5" (369 mm)
Antenna Height	24.0" (609.6 mm)
Radome Material	ASA
Radome Color	Gray, Brown and Black
Ingress Protection	Outdoor (IP65)
Wind Survival Rating	150 mph (241 km/h)

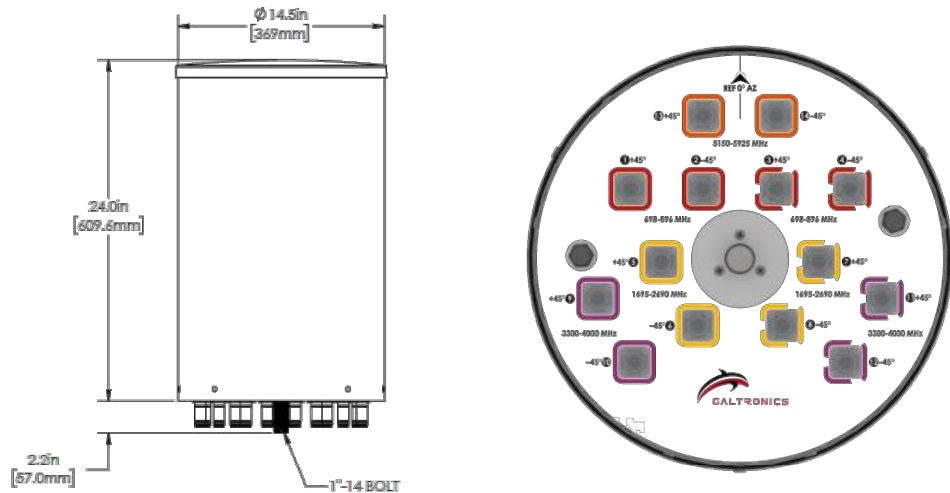
Copyright © 2021 – Galtronics Corporation Ltd.  
Proprietary Information. All rights reserved. Galtronics reserves the right to modify or amend any antenna or specification without prior notice.

WWW.GALTRONICS.COM



Additional Technical Information

Mechanical Dimensions



Mating Connector Torque:  
4.3-10: 3.7 ft-lb ( 5 Nm)

Part Numbers & Ordering Options			
Description	Color	Mounting Kit	Part Number
Quasi-Omni Pattern Canister Antenna with 14x 4.3/10(F) Connectors	Gray	Including MK-06761 mounting kit assembly	GQ2414-B6790-1xx
	Brown		GQ2414-B6790-6xx
	Black		GQ2414-B6790-Bxx

Mounting Brackets & Optional Accessories	
<p><b>Mounting Kit Assembly, Canister, Pole Top (wind speed of 150 mph)</b></p> <p>The assembly kit includes a 1" Mount Rod Adapter (MK-06678: universal interface for pole top installation) and a Pole Top Mounting Bracket (MK-06679: a bracket base attached directly to wood, metal and cement poles).</p> <p><b>Note:</b> 1" Rod Adapter (MK-06678) and Pole Top Mounting Bracket (MK-06679) may be ordered separately.</p>	<p>MK-06761</p>

Copyright © 2021 – Galtronics Corporation Ltd.  
Proprietary Information. All rights reserved. Galtronics reserves the right to modify or amend any antenna or specification without prior notice.

WWW.GALTRONICS.COM



927 SALIDA WAY  
AURORA, CO 80011  
303.343.6544

ZONING  
NOT FOR CONSTRUCTION



7670 S CHESTER ST  
CENTENNIAL, CO 80112

SITE NAME:  
EAGLE COUNTY GOVERNMENT  
OFFICE

SITE NUMBERS:  
FA LOC: 16231705  
PACE #: MRUTH058067  
USID: 327462

SITE ADDRESS:  
500 BROADWAY STREET  
EAGLE, CO 81631

PROJECT:  
MBO/SBO NSB

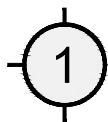
ISSUE PHASE:  
ZONING - REVISION B

ISSUE DATE:  
07.24.2023

EQUIPMENT  
DETAILS

Z3.1

SCALE SET FOR 24"x36" SHEET  
USE 1/2 SCALE FOR 11"x17" SHEET



1 ANTENNA SPECIFICATIONS

SCALE: 1-1/2" = 1'-0"