

PLOT DATE: Friday, January 12, 2024 2:15 PM LAST SAVED BY: SCROMLEY
DRAWING LOCATION: J:\Civil\23-1012-Hockett Gulch\PLANS\SDs\OVERALL SITE PLAN.dwg

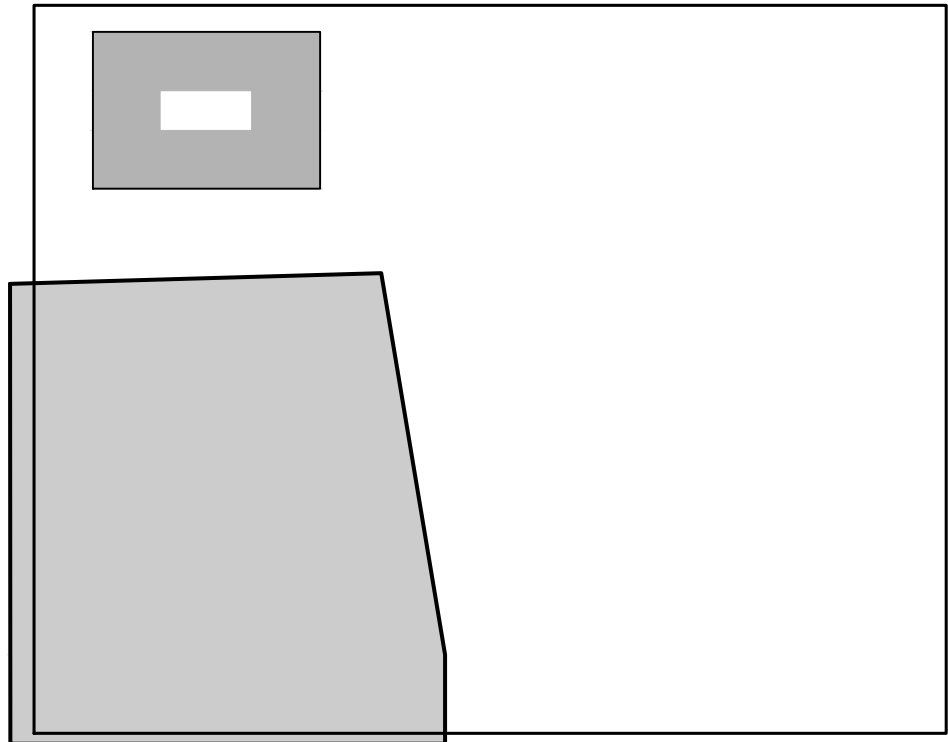
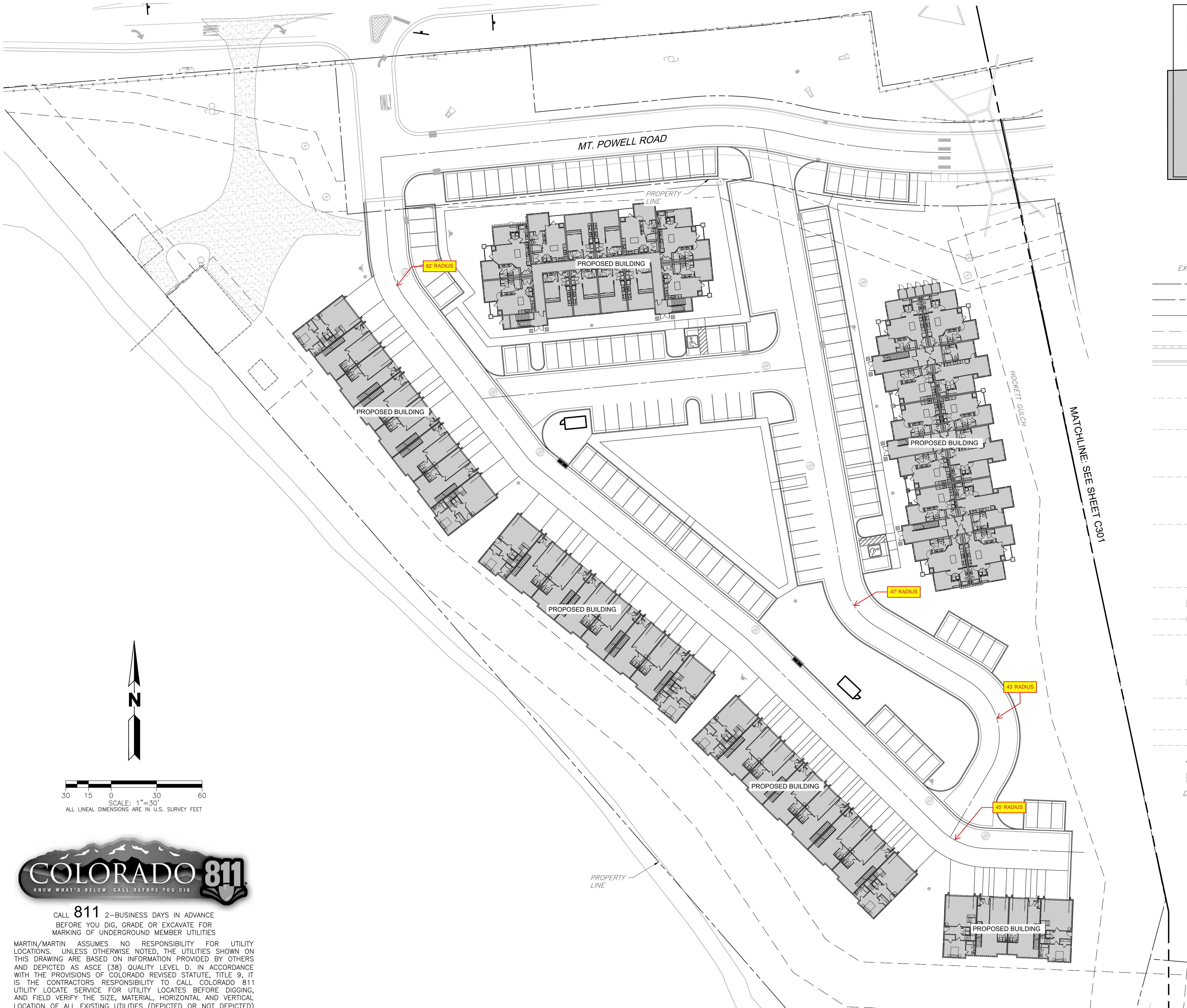


30 15 0 30 60
SCALE: 1"=30'
ALL LINEAL DIMENSIONS ARE IN U.S. SURVEY FEET



CALL 811 2-BUSINESS DAYS IN ADVANCE
BEFORE YOU DIG, GRADE OR EXCAVATE FOR
MARKING OF UNDERGROUND MEMBER UTILITIES

MARTIN/MARTIN ASSUMES NO RESPONSIBILITY FOR UTILITY
LOCATIONS. UNLESS OTHERWISE NOTED, THE UTILITIES SHOWN ON
THIS DRAWING ARE BASED ON INFORMATION PROVIDED BY OTHERS
AND DEPICTED AS ASCE (38) QUALITY LEVEL D. IN ACCORDANCE
WITH THE PROVISIONS OF COLORADO REVISED STATUTE, TITLE 9, IT
IS THE CONTRACTORS RESPONSIBILITY TO CALL COLORADO 811
UTILITY LOCATE SERVICE FOR UTILITY LOCATES BEFORE DIGGING,
AND FIELD VERIFY THE SIZE, MATERIAL, HORIZONTAL AND VERTICAL
LOCATION OF ALL EXISTING UTILITIES (DEPICTED OR NOT DEPICTED)
PRIOR TO THE COMMENCEMENT OF ANY CONSTRUCTION.



KEY MAP
1"=200'

LEGEND

EXISTING		PROPOSED
---	PROPERTY LINE	---
---	RIGHT-OF-WAY LINE	---
---	SECTION LINE	---
---	EASEMENT	---
---	RETAINING WALL	---
---	CURB & GUTTER	---
---	UTILITY CROSSING	⊗
---ST---	STORM SEWER	ST
⊗	STORM MANHOLE	⊗
---RD---	ROOF DRAIN	RD
⊗	STORM INLET	⊗
<	FLARED END SECTION	⊗
---SS---	SANITARY SEWER	SS
⊗	SANITARY MANHOLE	⊗
⊗	CLEAN OUT	⊗
---W---	WATER LINE	W
⊗	WATER VALVE	⊗
⊗	FIRE HYDRANT	⊗
⊗	WATER METER	⊗
---IR---	IRRIGATION LINE	IR
⊗	IRRIGATION CONTROL	⊗
---OHE---	OVERHEAD ELECTRIC	OHE
---	ELECTRIC LINE	E
⊗	LIGHT POLE	⊗
⊗	POWER POLE	⊗
ELEC	ELECTRIC METER	ELEC
---	TELEPHONE LINE	T
TEL	TELEPHONE PEDESTAL	TEL
---	CABLE TV	CT
---	GAS LINE	G
---	SIGN	---
D.W.	MONITOR WELL	D.W.
DRIVE	DRIVE	DRIVE

RESERVE AT HOCKETT GULCH

PHASE 2

CIVIL CONSTRUCTION PLANS

OVERALL SITE PLAN - WEST

No.	Issue / Revision	Date	Name

Job Number	23.1012
Project Manager	DREW VERRATTI
Design By	JUSTIN BROUSE
Drawn By	SKIP CROMLEY
Principal In Charge	MARK LUNA

THE DESIGNS SHOWN HEREIN INCLUDING ALL TECHNICAL DRAWINGS, SPECIFICATIONS, NOTES, AND SCHEDULES, ARE THE PROPERTY OF MARTIN/MARTIN, INC. & CAN NOT BE COPIED, REPRODUCED, OR COMMERCIALY EXPLOITED IN WHOLE OR IN PART WITHOUT THE SOLE AND EXPRESS WRITTEN PERMISSION FROM MARTIN/MARTIN, INC.

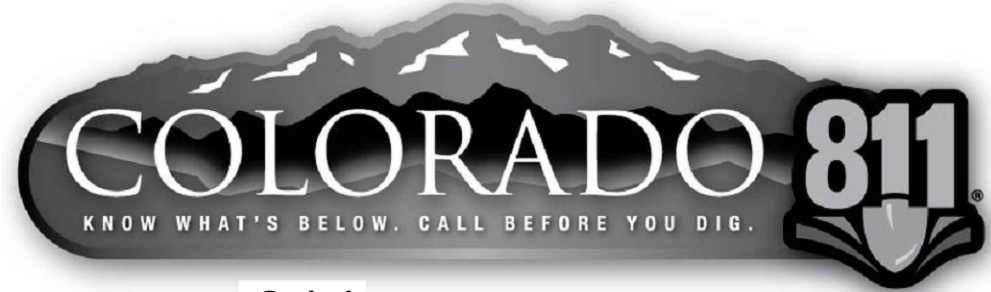
Sheet Number:

C400

MARTIN/MARTIN
CONSULTING ENGINEERS
12499 WEST COLFAX AVENUE, LAKEWOOD, COLORADO 80215
303.431.6100 MARTINMARTIN.COM

NOT FOR CONSTRUCTION

PLOT DATE: Friday, January 12, 2024 1:53 PM LAST SAVED BY: SCROMLEY
DRAWING LOCATION: J:\Civil\23-1012-Hockett Gulch\PLANS\SDs\OVERALL SITE PLAN.dwg



CALL 811 2-BUSINESS DAYS IN ADVANCE
BEFORE YOU DIG, GRADE OR EXCAVATE FOR
MARKING OF UNDERGROUND MEMBER UTILITIES

MARTIN/MARTIN ASSUMES NO RESPONSIBILITY FOR UTILITY
LOCATIONS. UNLESS OTHERWISE NOTED, THE UTILITIES SHOWN ON
THIS DRAWING ARE BASED ON INFORMATION PROVIDED BY OTHERS
AND DEPICTED AS ASCE (38) QUALITY LEVEL D. IN ACCORDANCE
WITH THE PROVISIONS OF COLORADO REVISED STATUTE, TITLE 9, IT
IS THE CONTRACTORS RESPONSIBILITY TO CALL COLORADO 811
UTILITY LOCATE SERVICE FOR UTILITY LOCATES BEFORE DIGGING,
AND FIELD VERIFY THE SIZE, MATERIAL, HORIZONTAL AND VERTICAL
LOCATION OF ALL EXISTING UTILITIES (DEPICTED OR NOT DEPICTED)
PRIOR TO THE COMMENCEMENT OF ANY CONSTRUCTION.

RESERVE AT HOCKETT GULCH

PHASE 2

CIVIL CONSTRUCTION PLANS

OVERALL SITE PLAN - EAST

Job Number 23.1012

Project Manager DREW VERRATTI

Design By JUSTIN BROUSE

Drawn By SKIP CROMLEY

Principal In Charge MARK LUNA

THE DESIGNS SHOWN HEREIN INCLUDING ALL TECHNICAL DRAWINGS,
SPECIFICATIONS, AND NOTES, ARE THE PROPERTY OF MARTIN/MARTIN,
& CAN NOT BE COPIED, REPRODUCED, OR COMMERCIALY EXPLOITED
IN WHOLE OR IN PART WITHOUT THE SOLE AND EXPRESS WRITTEN
PERMISSION FROM MARTIN/MARTIN, INC.

Sheet Number:

C401

MARTIN/MARTIN
CONSULTING ENGINEERS
12499 WEST COLFAX AVENUE, LAKEWOOD, COLORADO 80215
303.431.6100 MARTINMARTIN.COM

NOT FOR CONSTRUCTION